

STN Express[®] with *Discover!*[™]

Analysis Edition

Version 7.01 for Windows[®]

Getting Started

July 2004

Copyright © 2004 American Chemical Society
All rights reserved.

Table of Contents

STN Express with *Discover!* Analysis Edition (Version 7.01 for Windows)

Introduction	5
Requirements	6
Installing STN Express	8
Upgrading to Version 7.01 of STN Express	10
Installing Adobe® Reader®	10
Installing QuickTime™	11
Opening STN Express	11
Logon setup with STN Setup Wizard	12
Changing Account Preferences for academic accounts..	16
Connecting to STN	18
Connecting to CAS Registry BLAST®	19
Help	19
Technical support	20

Introduction

This booklet contains information on:

- installing STN Express
- upgrading to Version 7.01 of STN Express
- creating an STN logon setup with the STN Setup Wizard
- accessing STN and CAS Registry BLAST for a single-user installation

For information on setting up a network installation, see the ReadMe.txt file located in the main STN Express folder (stnexp).

For additional information about connectivity, and answers to frequent questions, visit www.cas.org/Support/express.html.

Requirements

The hardware and software requirements for STN Express with *Discover!*, Analysis Edition (Version 7.01 for Windows) are:

	Requirements if using CAS Registry BLAST	Requirements if not using CAS Registry BLAST
Computer	IBM® or compatible PC, 486 or higher; Pentium or higher recommended	IBM or compatible PC, 486 or higher; Pentium or higher recommended
Connection to STN	Local modem, networked modem, or an Internet connection that supports telnet protocol; CAS Registry BLAST requires an Internet connection that supports the HTTPS protocol connecting through port 443 to https://scifinder.cas.org	Local modem, networked modem, or an Internet connection that supports telnet protocol
Operating System	Microsoft® Windows 98, Me, NT 3.51, NT 4.0, 2000, or XP, with Internet Explorer 5.0 or higher; Windows NT, 2000, or XP recommended	Microsoft Windows 98, Me, NT 3.51, NT 4.0, 2000, or XP, with Internet Explorer 5.0 or higher
Memory	128 MB (RAM) or more; 256 MB or more recommended, depending on your operating system	128 MB (RAM) or more; 256 MB or more recommended, depending on your operating system
Available Hard Disk Space	95 MB or more; 110 MB or more recommended	55 MB or more; 70 MB or more recommended

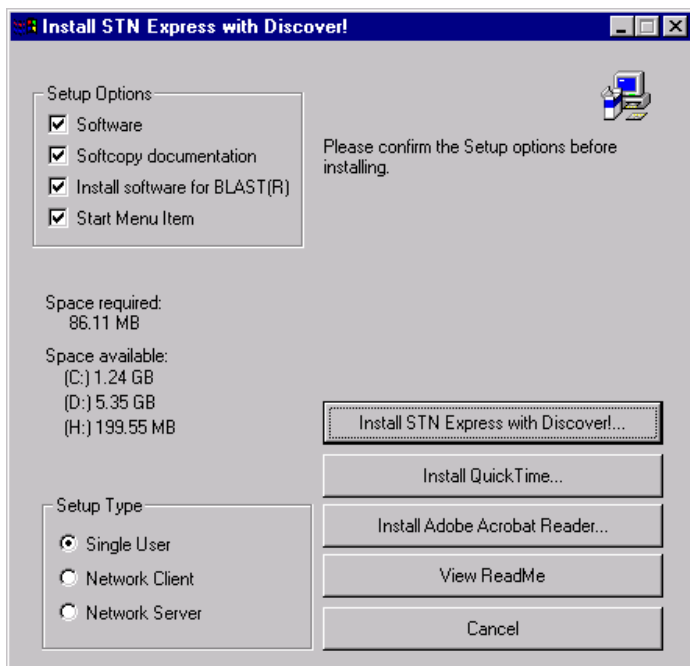
	Requirements if using CAS Registry BLAST	Requirements if not using CAS Registry BLAST
Monitor	Color monitor, 800 x 600 minimum screen resolution, minimum of 256 colors	Color monitor, 800 x 600 minimum screen resolution, minimum of 16 colors
Printer	High-quality graphics printer, e.g., laser or inkjet, recommended	High-quality graphics printer, e.g., laser or inkjet, recommended
Internet	Web browser and Internet connection for those features that provide links to the Web	Web browser and Internet connection for those features that provide links to the Web
Other software	Microsoft Excel 97 or higher, if using the Analyze Plus Wizard	Microsoft Excel 97 or higher, if using the Analyze Plus Wizard

Installing STN Express

1. Insert the STN Express with *Discover!* CD-ROM into the CD-ROM drive to start the STN Express setup program.

If the setup program does not automatically start, double-click the CD-ROM icon to open it and then double-click setup.exe.

2. Install STN Express with *Discover!* dialog box is displayed.



Select any or all of the following in the **Setup Options**:

- **Software** - to install the STN Express software
- **Softcopy Documentation** - to install the electronic STN Express User Guide
- **Install software for BLAST®** - to install the CAS Registry BLAST Java plug-in for STN Express; requires approximately 37 MB of hard disk space
- **Start Menu Item** - to create a Windows **Start** menu item for STN Express

Select the appropriate **Setup Type**:

- **Single User** - to install STN Express to your local hard drive
- **Network Client** - see your Network Administrator for details
- **Network Server** - for information, click the **View ReadMe** button to view the ReadMe.txt file

Click **Install STN Express with Discover!** Respond to the prompts to complete installation.

Upgrading to Version 7.01 of STN Express

1. Insert the STN Express with *Discover!* CD-ROM into the CD-ROM drive to start the STN Express setup program.
2. Choose your setup options and select **Single User** from the **Setup Type**.
3. Click **Install STN Express with *Discover!***.

Because you have an existing copy of STN Express, its current location is placed in the dialog box as the default. Click **Yes** to overwrite your existing copy of STN Express.

Note that only files provided by your previous STN Express installation programs are overwritten. Any structures, scripts, transcripts, reports, and logon setups that you have created are retained.

4. Respond to the prompts to complete installation.

Installing Adobe® Reader®

The STN Express User Guide is a PDF file. You will need Adobe® Reader® to view the User Guide. To install Adobe Reader from the STN Express with *Discover!* CD-ROM:

1. Insert the STN Express with *Discover!* CD-ROM into the CD-ROM drive.
2. Click the **Install Adobe Acrobat Reader** button.
3. Respond to the prompts to complete the installation.

Installing QuickTime™

QuickTime is needed to display and save images for some of the post-processing features in STN Express. To install QuickTime:

1. Insert the STN Express with *Discover!* CD-ROM into the CD-ROM drive.
2. Click the **Install QuickTime** button.

Choose **Custom** and pick **QuickTime Essentials**, **QuickTime Internet Extras**, **QuickTime Still Image**, and **QuickTime Authoring**.

3. Respond to the prompts to complete the installation.

Note: If there is a new installer available for QuickTime, you will be directed to download and install this version from the QuickTime web site.

Opening STN Express

1. Launch STN Express from the Windows **Start** menu. By default, an entry has been made under Programs.
2. When STN Express is open, the STN Express Main Menu and Toolbar are displayed.



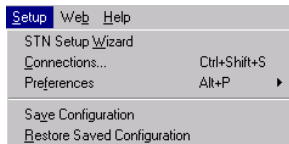
Logon setup with STN Setup Wizard

Your online connection and logon information are required each time you connect to STN, CAS Registry BLAST, or another online host. This information is stored in a logon setup. This booklet provides an example of creating an Internet logon setup with the STN Setup Wizard.

For the latest logon setup information, visit www.cas.org/Support/express.html.

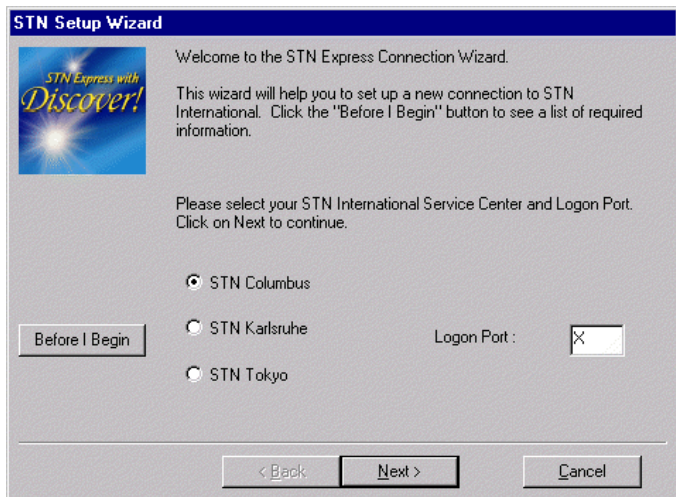
If you do not have any logon setups, the STN Setup Wizard starts when you launch STN Express.

You may also access the wizard via the **Setup** menu.




Follow these steps:

1. Click the **Before I Begin** button on the opening page for details of how to use the wizard.
2. Select the STN Service Center for your account and confirm your STN Logon Port. For commercial accounts, X is usually correct. For other accounts, consult the materials supplied with your STN login ID. Click **Next**.



STN Setup Wizard

 Welcome to the STN Express Connection Wizard.

This wizard will help you to set up a new connection to STN International. Click the "Before I Begin" button to see a list of required information.

Please select your STN International Service Center and Logon Port. Click on Next to continue.

STN Columbus

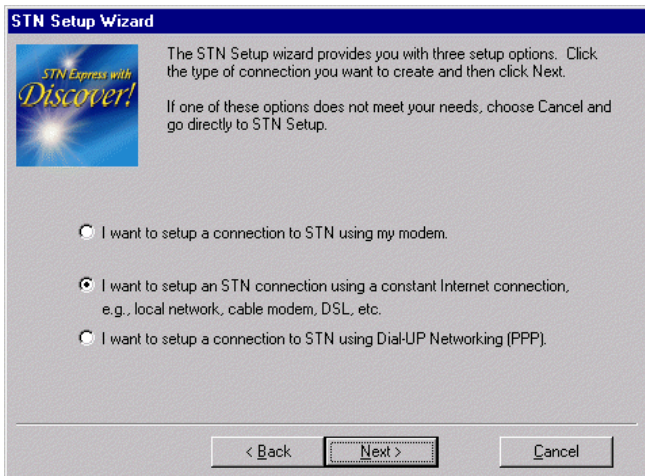
STN Karlsruhe

STN Tokyo

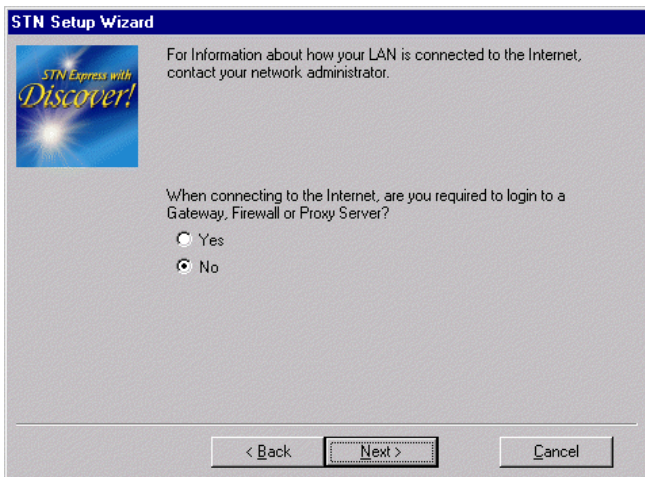
Logon Port :

< Back Next > Cancel

3. Select the middle radio button to specify an Internet connection to STN.



4. If you do not have to logon to a firewall or gateway before establishing an Internet connection to STN, click **No**.



5. Enter a name for your new logon setup. If you choose, type your STN login ID and password to save them in the setup. Click **Finish**.

STN Setup Wizard



You have completed the Setup Wizard!

To save your Setup, please provide a name and press Finish to create your Setup

Setup Name:

You may also enter your STN Login ID and password if you want to store them with your Setup. If you do not enter them here, you will be prompted at Logon time.

STN Login ID:

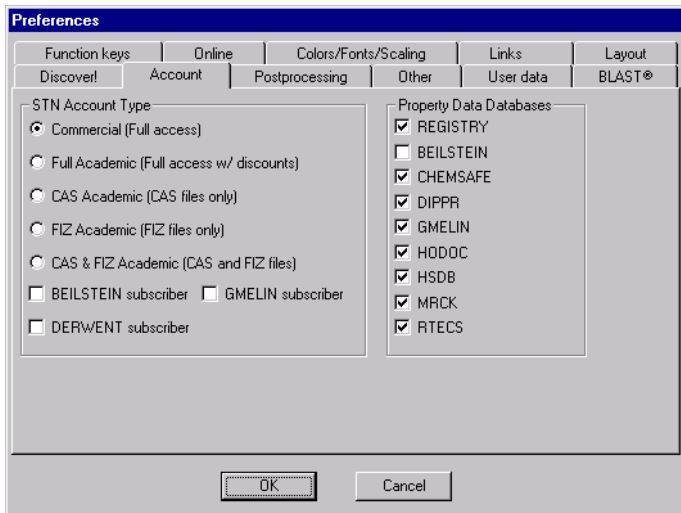
STN Password:

< Back Finish Cancel

Changing Account Preferences for academic accounts

If you have an academic account, you need to change your Account Preferences in STN Express.

1. Click **Setup** from the Main Menu. Select **Preferences** and then **STN Online and Results**.
2. Click the **Account** tab to display the STN Account Type box.



Select the type of account you have and its features:

- **Commercial (Full access)** - default setting
- **Full Academic** - if you have access to STN files under your academic program
- **CAS Academic** - if you have access to CAS discounted files only
- **FIZ Academic** - if you have access to FIZ discounted files only
- **CAS & FIZ Academic** - if you have access only to CAS and FIZ files under your academic program
- **BEILSTEIN subscriber** - if you have a BEILSTEIN subscription
- **GMELIN subscriber** - if you have a GMELIN subscription
- **DERWENT subscriber** - if you have a DERWENT subscription

Under **Property Data Databases**, select the property databases that the *Discover!* wizards are authorized to access.

Click **OK**.

Connecting to STN

1. Click the **Logon** button ().

2. The Select Logon Settings dialog box is displayed if you have more than one setup.

This dialog box is not displayed if you have created only one setup.

Select a setup name and click **OK**.

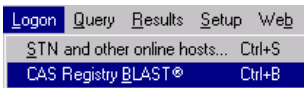
3. The Capture Session dialog box is displayed.

Type a name in the **File name** text box to store your online session in a transcript. Click **Open** to capture a transcript. Click **Cancel** to continue the logon process with no transcript.

4. After STN Express makes the connection and logs you in, the STN arrow prompt (=>) is displayed in the STN Online and Results window.

Connecting to CAS Registry BLAST®

1. Click **Logon** from the Main Menu and select **CAS Registry BLAST®**.



2. The Select BLAST® Logon Settings dialog box is displayed, if you have more than one setup.

Select an Internet setup and click **Yes**. Or click **No** to enter your login ID, password, and STN Service Center manually.
3. The CAS Registry BLAST® splash screen is displayed.
4. Enter your login ID, password, and STN Service Center and click **OK** if you chose a setup that did not include this information or if you clicked **No** in the previous step.
5. The Result Set Manager window of CAS Registry BLAST® is displayed. If you have done previous searches using the same login ID, a list of reports is displayed. Click **New Search** to conduct a new CAS Registry BLAST search.

For more information on CAS Registry BLAST connectivity, visit www.cas.org/Support/express70/win/blastconnect/blastconnect.html.

Help

You have the following options for STN Express help:

- select an option from the **Help** menu on the Main Menu
- press **F1** or click the **Help** buttons for context-sensitive help

Technical support

North America and elsewhere

STN c/o CAS
P.O. Box 3012
Columbus, Ohio 43210-0012 U.S.A.

CAS Customer Care:

Phone: 800-753-4227 (North America)
614-447-3700 (worldwide)
Fax: 614-447-3751
E-mail: help@cas.org
Internet: www.cas.org/supp.html

Europe

STN c/o FIZ Karlsruhe
P.O. Box 2465
76012 Karlsruhe, Germany
Phone: 49 7247/808-555
Fax: 49 7247/808-259
E-mail: helpdesk@fiz-karlsruhe.de
Internet: www.stn-international.com

Japan

STN
c/o Japan Association for International Chemical Information (JAICI)
Nakai Building
6-25-4 Honkomagome, Bunkyo-ku
Tokyo 113-0021, Japan
Phone: 81 3-5978-3601 (Technical Service)
81 3-5978-3621 (Customer Service)
Fax: 81 3-5978-3600
E-mail: helpdesk@jaici.or.jp (Technical Service)
cas-stn@jaici.or.jp (Customer Service)
Internet: www.jaici.or.jp

STN

c/o Japan Science and Technology Agency (JST)
5-3 Yonbancho, Chiyoda-ku
Tokyo 102-8666, Japan
Phone: 81 3-5214-8402
Fax: 81 3-5214-8420
E-mail: helpdesk@mr.jst.go.jp
Internet: pr.jst.go.jp/db/STN/